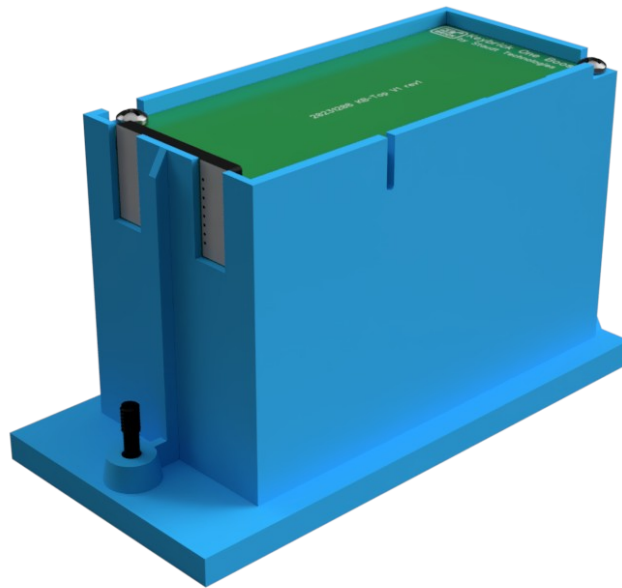




Keybrick Move Lite

Manual

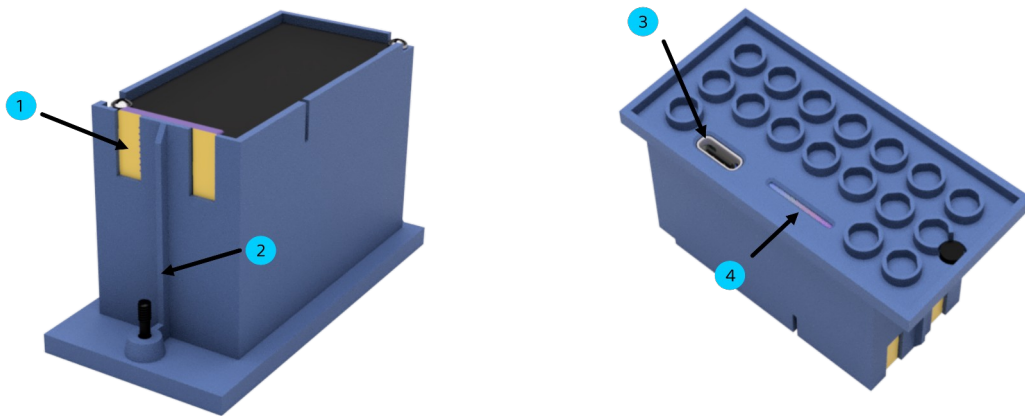


SKU: KBM-lite
Date: 2024-11-26
Revision : 2

Introduction

Thank you for purchasing Keybrick Move Lite, the USB powerbank adapter for the LEGO® Powered Up Hub 88006. It is designed to replace the original battery clip in the hub. With Keybrick Move Lite you can attach an external USB Power Delivery compatible powerbank to your LEGO® Powered Up Hub 88006 for longer playtime.

We wish you the best of fun with this new addition to your favorite toy. Please read these instructions carefully. If you feel that some information is missing or you need assistance with your Keybrick, please contact us via our website: <https://keybrick.one/>



- (1) Contact plate. Must be facing contact springs inside the hub
- (2) Matching notch preventing reverse insertion
- (3) USB Type C connection port
- (4) Status indicator

Specifications

	Value / description
Size	64x37x31,6 mm
Weight	~20 g
Power supply	USB Power Delivery compatible powerbank with support for 9V output negotiation
Ouput characteristics	8.4V
Output power	15W max.

LEGO® set compatibility:

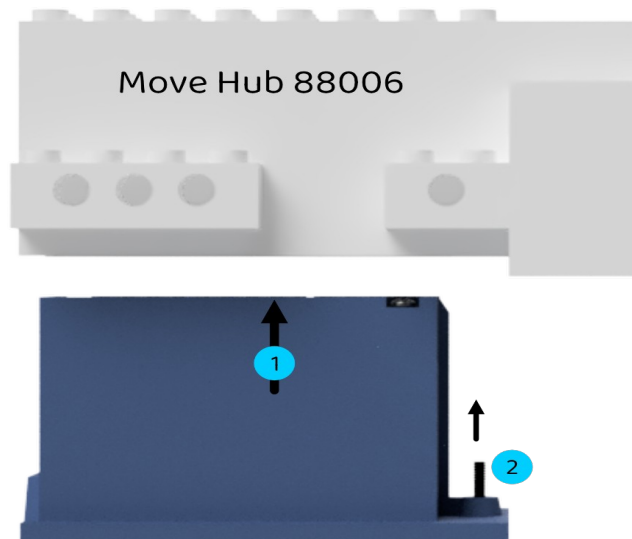
Keybrick Move Lite is compatible with all sets using the LEGO® Powered Up Hub 88006.

Currently we know of the following sets:

- LEGO® Boost Robotics Set 17101
- LEGO® *Star Wars*™ Boost Droide 75253

Installation

Start by removing the original battery cradle and its cover by removing the screw on the bottom of the hub (2).



Then insert Keybrick Move Lite in the right orientation (1)
Secure Keybrick Move Lite with the provided screw (2)

You should be ready to go.

USB Powerbank compatibility

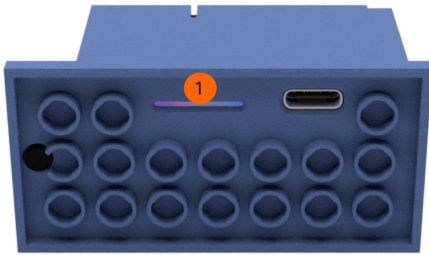
In order for Keybrick Move Lite to function properly, a compatible power bank or power source is required. In order to provide the required output voltage Keybrick Move Lite will negotiate the output power with the plugged in source and the indicator light will switch from red to blue when the output voltage could be negotiated .

Keybrick Move Lite is designed to withstand input voltage up to 21V so you can safely try power banks and power supplies by plugging them into Keybrick Move Lite and seeing if the indicator light switches to blue. Do not perform these trials when having Keybrick Move Lite mounted in your LEGO® Powered Up Hub 88006 as a safety measure.

Operation Mode

Connect a compatible USB powerbank to the USB Type C port.

The status light (1) should turn blue when a compatible powerbank is connected.



Status indicator (1)

Normal Operation:

When Keybrick Move Lite is connected to a compatible powerbank the status indicator (1) shows a blue light and supplies the attached hub with power.

Once you reach the end of charge of your powerbank the status light extinguishes and no more power will be supplied.

Error status:

Power supply below 9V: If a non compatible powerbank is attached to Keybrick Move Lite the status indicator (1) will stay red.

No startup: If Keybrick Move Lite does not start up when plugging in a compatible powerbank, please make sure the powerbank is fully charged.

Support

If you experience any difficulty with Keybrick Move Lite please contact our support using the contact form on our website. We will get back to you as soon as possible:

<https://keybrick.one/contact/>

Note on product safety

Please note that Keybrick Move Lite is designed to be operated within the hub. Keybrick Move Lite itself is not a toy and should not be left in reach of small children. Once mounted in the hub using the supplied screws the same precautions apply as when using the hub in its original setup.

While all necessary technical measures have been implemented to ensure safe operation, we cannot account for external factors such as mechanical damage, shocks, fire, water/high humidity, or other non-intended use.

DO NOT throw Keybrick in fire. DO NOT connect Keybrick with non-standard powerbanks.

Please dispose of Keybrick at your local electronics waste recycling center at the end of its lifecycle or contact us for advice for recycling possibilities.

Legal

LEGO® is a trademark of the LEGO Group, which does not sponsor, authorize, or endorse Keybrick. Keybrick and Staudt Technologies GmbH are not related to the LEGO Group in any way. Any use of original LEGO® models is just for showcase as Keybrick is a compatible add-on.

Warranty

Warranty declaration according to German BGB § 477:

Duration: 3 years from date of purchase

Warrant: Staudt Technologies GmbH

Area of validity: all countries we have been selling to at the time of purchase

Legal obligations: this warranty does not affect and/or limit any of our legal obligations.

Claiming:

Please contact us at following address in case you experience an issue with your device:

Staudt Technologies GmbH
Am Bahndamm 3
78234 Engen
GERMANY

Tel.: +49 77339819950
Email: helpdesk@keybrick.one

We will provide you support and issue an RMA number if deemed necessary. In case of a return the device must be shipped to our location. Please note that the receipt or bill of sales must be provided for any claim under warranty.

Coverage:

The warranty includes all loss of function during the warranty period that have been caused by manufacturing issues or defects in used materials. The warranty does not cover loss of function caused by in improper use of the device.

It is at our discretion to fulfill a warranty claim by repairing or replacing your device. The repaired or replaced device is covered for the remainder of the original product warranty period.

Excluded causes of failure:

Damages or failures resulting from...

- Improper use
- Force majeure
- Modifications to the device
- Repairs executed by unauthorized 3rd-parties
- Water ingress or humidity
- Impact, dropping and similar events

...are not covered under this warranty.

Cost of repair:

Repair under warranty is free of charge. This excludes the cost of shipping the device to our repair center.

Exclusion of further claims:

Claims beyond the services mentioned in this statement of warranty are excluded. Statutory claims remain unaffected

Final provisions:

This warranty is solely subject to German law, to the exclusion of the United Nations Convention on contracts for the International Sale of Goods (CISG). The place of jurisdiction is Engen, Germany.

Declaration of conformity

We the manufacturer:

Staudt Technologies GmbH
Am Bahndamm 3
78234 Engen
GERMANY

Declare that the product:

Keybrick Move Lite (SKU: KB1-lite)

Is in conformity with the following standards and/or normative documents:

European Union (EU):

- EN55014-1:2017-A11:2020
- EN55014-2:2015
- ISO 8124-1:2009
- RoHS 2 Directive 2011/65/EU
- WEEE Directive 2012/19/EU
- Packaging Directive 94/62/EC and 2013/2/EU amending Annex I

Please contact Staudt Technologies GmbH for related inquiries for more information.

Engen, November 10th 2023.



Yannic Staudt
CEO